

GTS SUMMARY

Using GTS in Sire Selection

GTS ALLOWS BREEDERS TO MAKE THE MOST INFORMED BREEDING DECISIONS IN THE INDUSTRY.

The ABS GTS (Genetic Type Summary) program accurately and objectively describes physical trait differences for individual sires' progeny. By using the STAs (Standardized Transmitting Abilities) beef breeders can anticipate the type, or physical characteristics, that a bull will transmit to his offspring. STAs for each trait are calculated using herdmate comparisons on large numbers of a sire's progeny using a linear evaluation system.

These linear proofs are computed using statistical procedures similar to those used to calculate EPDs. STAs indicate how bulls compare for each trait included in the evaluation.

STAs also allow breeders to determine where a bull ranks within a given population for each trait. A bull with an STA of 0.0 is average for that trait, compared to all other bulls evaluated. For any given trait, the majority of the STAs on all bulls evaluated will be near 0.0. In fact, approximately 68 percent of the sires' STAs should fall between -1.0 and +1.0 with over 99 percent between -3.0 and +3.0. Keep in mind that the population dealt within these GTS analyses is not the entire breed, but a relatively select group of animals that are predominantly A.I. sired.

This chart illustrates the STA range and the description of the traits relative to the STAs. It also shows the percentage of the bull population that scores in that STA range.

2005 GTS Data	STA	#HEAD	-2	-1	0	+1	+2
Stature	-0.6	1221			■		
Capacity	+0.8	1221				■	
Body Length	+0.7	1221				■	
Muscling	+0.9	1221				■	
Rear Legs	-0.2	1221		■			
Feet & Pasterns	+0.8	1221				■	
Femininity	+1.1	760				■	
Udder Attachment	+3.1	243					■
Udder Depth	+2.2	243					■
Teat Size	+3.9	243					■

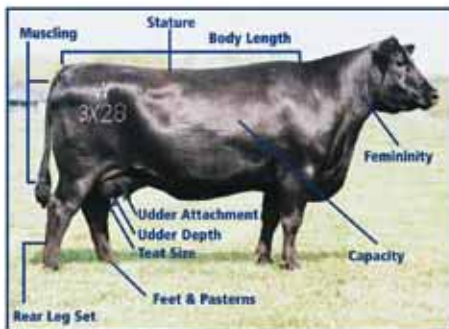
Comments: Reduced frame; Added capacity & body length; Heavy muscled; Strong feet & pasterns; Outstanding teat & udder quality

READING THE INFORMATION INDIVIDUAL SIRES

For example, 29AN1413 EXT's STA for muscle is +0.9. This indicates that he sires progeny that are heavier muscled than nearly 84% of the sires evaluated, as can be seen by referring back to the GTS Distribution Range chart.

The number of progeny evaluated is provided in the GTS charts to give breeders an estimate of the reliability of the STAs. The higher the number of progeny evaluated, the greater the reliability of the STAs. For some sires, a Pedigree Estimate (PE) will be given. This indicates that the bull's STAs are based on the STAs of his sire and maternal grandsire, not his progeny.

New, updated GTS information will be available beginning October 15 on the ABS website.



GENETIC TYPE SUMMARY

An objective linear evaluation of a bull's transmitting ability for various physical traits.

GTS describes differences between bulls' progeny and does not attempt to classify cattle based on an ideal animal.

STA (Standard Transmitting Ability) - A standardized measure of a sire's transmitting ability for a given trait.

STAs indicate how bulls compare, or relate to each other, for each trait included in the evaluation.

STAs also allow you to determine where a bull falls within a given population for each trait. A bull with an STA of 0.0 is average for that trait compared to all other bulls evaluated. For any given trait, the majority of the STAs on all bulls evaluated will be near 0.0. In fact, 68 percent of the sires' STAs should fall between -1.0 and +1.0, with 99 percent between -3.0 and +3.0.

Head (Progeny Number) - Provides a measure of accuracy by indicating the number of a bull's progeny that have been evaluated for a given trait.

Stature - Evaluation of progeny frame size, based on hip height. Higher STA indicates taller size.

Capacity - Progeny evaluation combines depth of fore rib along with spring of rib and width of chest floor as well as depth of flank. Higher STA indicates larger capacity.

Body Length - Evaluation of progeny length from withers to pins. Higher STA indicates longer body length.

Muscling - Progeny evaluation combines width of rump and hindquarter, with secondary consideration given to forearm muscling. Higher STA indicates more muscling.

Rear Leg Set - Evaluation of progeny rear leg structure, with STAs near 0 being ideal. Higher STAs tend towards sickle hocked; lower STAs tend towards posty.

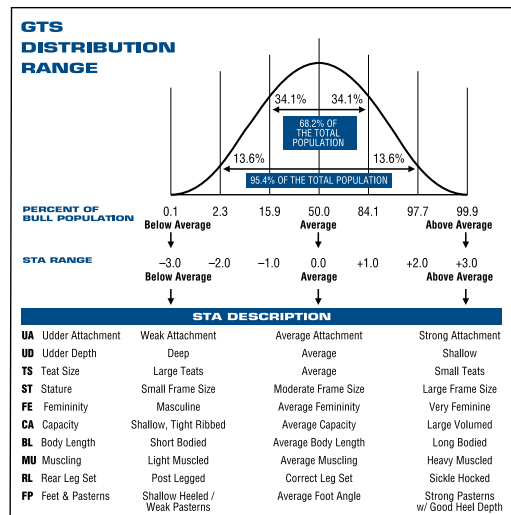
Feet and Pasterns - Evaluation of progeny length and strength of pastern and foot angle. Higher STA indicates stronger pastern with more depth of heel.

Femininity - Evaluation of daughters' angularity and their ability to carry condition without becoming coarse and masculine. Higher STA indicates more femininity.

Udder Attachment - Daughter evaluation combines fore udder attachment, rear udder height, rear udder width, and center support. Higher STA indicates stronger attachment.

Udder Depth - Evaluation of daughters' udder depth from top of fore udder to udder floor. Higher STA indicates higher, better supported udders.

Teat Size - Evaluation of daughters' teat size, including length and diameter. Higher STA indicates smaller teat size.



Fall 2008 GTS Summary

ABS Angus Sires



NAAB Code	Name	Stature	Feminity	Capacity	Body Length	Muscling	Rear Legs	Feet & Pasterns	Udder Attach	Udder Depth	Teat Size	Prog Body	ProgFem	ProgUdder	Herds
29AN1501	602C	0.0	-2.4	1.7	-1.1	1.4	-0.3	0.8	1.7	1.5	1.8	442	191	129	33
29AN1519	PLOWMAN	-0.5	-0.5	2.2	-0.3	2.6	-1.7	1.0	0.3	-0.2	-0.2	131	73	16	17
29AN1520	N BAR PRIME TIME	-1.3	-0.7	0.2	-0.9	0.4	-0.1	-1.0	1.0	1.5	3.0	94	62	27	7
29AN1523	NEW DESIGN 878	0.2	0.0	0.0	0.0	0.7	-1.2	0.4	0.3	0.4	-0.2	338	181	104	45
29AN1530	POWER DESIGN	0.0	-1.2	0.9	-0.6	0.2	-1.9	0.2	0.6	0.6	0.6	56	13	PE	5
29AN1532	EXT 4137	-0.6	1.0	0.4	0.1	0.8	-0.5	1.0	0.8	-0.7	1.8	51	35	32	3
29AN1543	STRATEGY	-0.1	1.4	-0.9	0.5	-1.2	0.7	-0.3	1.0	0.8	0.9	82	49	10	12
29AN1551	DESTINATION 928	0.7	-1.4	-1.0	1.2	-0.5	0.1	0.0	0.0	0.0	-0.5	61	52	17	13
29AN1556	LEAD ON	0.0	0.2	0.1	0.3	0.7	0.2	0.3	0.1	1.1	0.6	192	110	40	33
29AN1567	MODERN DESIGN	-0.4	1.8	0.4	-0.2	1.1	1.7	-1.1	0.6	0.4	0.5	43	41	PE	4
29AN1569	BANDWIDTH	-0.5	-1.6	1.5	-1.1	1.6	-2.2	2.4	0.7	0.2	0.8	37	30	PE	3
29AN1574	OBJECTIVE	-0.3	1.8	1.1	-0.5	-0.8	1.3	1.5				97	38		11
29AN1577	EXTRA H6	-0.9	0.9	0.5	-0.1	-0.5	-0.2	0.2	1.4	1.3	2.5	70	37	47	9
29AN1586	HIGHMARK	-0.5	0.8	-0.2	0.0	-0.4	-0.4	0.1	0.5	0.6	0.9	12	2	PE	3
29AN1589	FORESIGHT	-0.8	-0.7	0.9	-1.2	0.7	-0.6	1.4	0.7	-0.1	1.1	182	112	21	11
29AN1593	NEW DESIGN 9150	1.2	2.8	-2.6	2.0	-1.5	2.7	-1.3	1.6	1.4	1.2	81	78	23	7
29AN1596	IDEAL 7451	-0.5	0.8	1.9	-0.2	0.4	3.0	-1.7	-0.1	-0.1	0.3	101	45	31	6
29AN1597	RITO PRIME	-0.6	-0.3	0.0	0.0	-0.2	-0.5	0.3	1.7	1.5	1.9	33	33	PE	3
29AN1608	ANALYST	-1.8	-0.5	1.4	-1.8	0.9	0.4	-1.0	0.5	-0.4	0.1	30	0	PE	1
29AN1609	NEW STANDARD	-0.3	-0.6	0.8	-1.3	0.2	-0.4	0.1				15	0		1
29AN1616	NEW LEVEL	0.6	2.5	-0.6	0.6	-0.3	2.7	-3.2	0.1	-0.4	-1.4	190	131	60	24
29AN1618	PRIME CUT 0145	-1.1	1.3	0.5	-1.6	0.6	0.0	-0.4	0.0	0.1	0.5	59	43	24	8
29AN1619	MORGANS DIRECTION	-1.3	-0.4	-1.7	-0.9	1.0	-2.9	-0.2	0.4	0.8	1.0	80	13	PE	8
29AN1623	ALLIANCE I87	-1.2	-0.2	2.8	-2.0	2.0	0.1	-1.1	1.4	0.4	1.6	118	89	28	7
29AN1624	BANDO 0699	1.3	1.4	-0.1	0.8	0.0	-2.3	2.7	0.8	0.3	1.1	34	14	PE	5
29AN1627	CONNECTION X15	0.5	0.5	-0.1	0.4	0.5	-1.8	1.1	0.1	0.3	0.2	26	26	11	1
29AN1633	SHEAR FORCE	-0.8	0.5	0.8	1.2	1.3	-0.7	1.0	-0.4	0.1	0.6	42	34	16	5
29AN1636	MAGNITUDE	-2.8	-0.4	2.7	-2.8	2.4	-0.8	0.9	1.3	0.7	1.5	37	31	PE	3
29AN1637	RITO RITO	-0.4	0.7	-0.3	-0.6	-0.5	0.2	1.0				PE	PE		1
29AN1639	OPEN RANGE	-2.1	0.4	3.9	-3.3	0.4	0.6	-1.8	2.3	1.8	2.7	36	36	15	2
29AN1640	IN FOCUS	-1.0	-1.9	2.2	-1.7	1.2	-1.4	2.3	0.7	0.2	0.3	201	123	18	23
29AN1642	IMAGE MAKER	0.0	-1.2	1.3	2.8	0.5	-1.8	1.2	0.7	0.1	0.9	108	96	32	10
29AN1644	EXTRA K205	-0.1	1.0	-0.1	2.3	0.5	0.5	-1.4	0.4	0.7	1.0	111	59	28	8
29AN1645	FREIGHTLINER 2096	-0.8	0.0	1.1	-0.6	0.6	-0.4	0.1	1.2	0.5	0.7	PE	PE	PE	2
29AN1646	POUNDMAKER 21	0.0	-0.4	-0.2	0.2	0.3	0.6	-0.6	0.7	0.7	-0.2	30	30	15	3
29AN1648	INITIATIVE	0.1	0.5	0.5	0.3	0.4	-0.5	-0.3	1.2	0.7	0.6	PE	PE	PE	1
29AN1649	BANDO 4597	0.0	0.8	0.2	0.5	0.5	-0.9	0.7	1.2	0.6	1.6	PE	PE	PE	0
29AN1650	DAYBREAK	0.3	0.2	0.7	0.9	-0.3	-1.3	0.8	1.2	0.9	0.4	18	17	PE	2
29AN1653	MAINLINE	-0.1	1.2	0.1	0.0	0.9	0.0	1.8				41	27		4
29AN1654	CURVE BENDER	-1.1	-2.9	0.8	-1.2	0.4	-2.3	0.7				17	17		2
29AN1656	GREATPLAINS 9520	-0.8	2.1	1.0	-0.1	0.2	1.6	-1.1	2.5	2.3	1.5	33	29	12	2
29AN1657	EXT A1747	-0.4	0.3	1.0	0.5	0.4	-0.4	0.9				14	14		1
29AN1663	ON TRACK	0.0	-0.2	1.2	0.2	0.6	0.2	-0.2	1.3	1.0	1.0	PE	PE	PE	0
29AN1664	PREFERENCE	0.0	-2.2	-2.0	0.0	-0.7	0.9	0.0				23	23		1
29AN1671	GRAHAM 52170	-1.7	-0.7	0.8	-1.7	0.1	-1.1	0.0				16	12		2
29AN1672	HINDSIGHT	-0.6	-0.1	0.4	-0.8	0.5	-0.4	0.8	0.8	0.1	0.7	PE	PE	PE	0
29AN1673	CONTRAST	-1.2	-0.2	0.6	0.0	1.0	-1.2	1.2				31	14		1
29AN1674	EXCELLENCY	-0.4	0.5	1.2	0.4	0.5	0.4	0.2	2.3	1.6	2.4	11	0	PE	1
29AN1677	PROTEGE	-0.5	-0.2	0.1	-0.4	1.1	-2.2	1.8				21	0		1
29AN1679	NEW DESIGN 458N	-0.2	-0.4	0.3	-0.4	-0.1	-0.1	-0.2	0.7	0.6	0.4	PE	PE	PE	1
29AN1681	PREDESTINED N5905	-0.3	0.1	-0.5	-0.3	0.0	-1.0	-0.1	0.7	0.5	1.0	PE	PE	PE	0

Fall 2008 GTS Summary ABS Angus Sires



NAAB Code	Name	Stature	Feminity	Capacity	Body Length	Muscling	Rear Legs	Feet & Pasterns	Udder Attach	Udder Depth	Teat Size	Prog Body	ProgFem	ProgUdder	Herds
29AN1684	OVERTIME	0.0	0.1	1.0	-0.3	0.9	-0.5	0.4	0.8	0.6	1.0	PE	PE	PE	0
29AN1687	ADVANTAGE PLUS	-0.3	0.4	0.1	0.3	-0.1	0.6	-0.2	1.0	0.6	0.8	PE	PE	PE	0
29AN1688	RITO REVENUE	-0.3	0.1	-0.5	-0.3	0.0	-1.0	-0.1	0.7	0.5	1.0	PE	PE	PE	0
29AN1689	BLUEPRINT	-0.4	0.5	-0.4	-0.2	0.3	-0.1	0.0	0.4	0.3	0.4	PE	PE	PE	0
29AN1693	ALL AROUND	-0.4	-0.1	0.0	-0.7	0.1	0.0	-1.2				PE	PE		0
29AN1694	FULL FREIGHT	-0.7	-0.5	0.6	-0.6	0.6	0.0	0.0	0.4	0.2	0.4	PE	PE	PE	0
29AN1695	RITO LEGACY	-1.5	-0.8	1.4	-0.4	1.9	0.5	-0.6	-0.5	-1.0	0.2	PE	PE	PE	1
29AN1700	RITO 2B94	-0.5	-0.1	0.4	-0.2	0.4	1.1	-1.0	1.3	0.2	0.9	PE	PE	PE	0
29AN1701	WAVE	-0.4	0.7	0.0	0.2	0.0	-0.2	0.2				PE	PE		1
29AN1702	BANDO 346-90	0.0	0.6	-0.3	0.7	-0.2	0.1	0.2	1.0	0.5	1.1	PE	PE	PE	0
29AN1703	RAINMAKER 9723	-0.5	0.1	0.7	-1.2	0.2	-0.3	0.5				25	17		1
29AN1705	OBJECTIVE 7125	-0.2	0.7	0.5	-0.4	-0.6	0.6	0.7				PE	PE		0
29AN1711	ALLIED	-0.5	0.5	1.3	-0.9	0.9	0.7	-1.3	0.8	0.1	0.4	PE	PE	PE	0
29AN1712	HIGHER STANDARD	-0.4	-0.1	0.5	-0.7	0.0	-0.2	0.1				PE	PE		0
29AN1714	FUTURE FOCUS	-0.7	-1.2	0.8	-1.3	0.6	-0.8	1.2	0.3	0.3	0.3	PE	PE	PE	0
29AN1716	PICASSO	-0.9	0.3	0.8	0.4	1.1	0.3	0.0	1.1	0.4	1.8	PE	PE	PE	0
29AN1718	ENDURANCE	-0.2	-0.2	-0.4	-0.3	0.1	-0.9	0.0	0.1	0.3	0.1	PE	PE	PE	0
29AN1720	CONSENSUS	-1.0	-0.2	1.7	-1.4	0.9	-0.4	-0.3	1.5	0.8	1.4	PE	PE	PE	0
29AN1726	MAVERICK	-0.7	-0.3	1.3	-0.9	1.3	-0.1	-0.2				PE	PE		0
29AN1737	REPUTATION	-0.3	-0.1	-0.5	-0.5	-0.1	-1.0	-0.2	0.7	0.8	0.9	PE	PE	PE	0
29AN1738	AFFIRMATIVE	0.1	1.2	0.5	0.0	-0.4	0.5	0.9				PE	PE		1
29AN1740	LEAD ON 424	-0.2	0.1	0.0	-0.1	0.1	0.0	0.4				PE	PE		0
29AN1742	CONNEALY KABOOM 7324	-0.1	-0.5	0.8	0.1	0.4	0.3	0.1				PE	PE		0
29AN1743	OUTFITTER	-1.6	-0.4	1.5	-1.6	1.3	0.1	-0.1				PE	PE		0
54AN5121	GARDENS PRIME STAR	-1.0	0.3	0.1	-0.4	0.0	0.6	-1.2	0.8	1.1	1.7	26	10	PE	5
90AN1777	S A F CONNECTION	0.5	1.3	-0.7	0.6	-0.3	0.1	0.0	0.2	0.1	-0.1	20	20	PE	3
237AN1680	S A F DIRECTIVE	0.3	0.8	-0.6	0.2	0.4	0.0	0.6	0.5	0.2	0.5	29	29	PE	2
237AN1810	BASIN FRANCHISE P142	-0.5	0.1	-0.2	-0.3	0.0	0.1	0.6	0.5	0.5	0.8	34	15	PE	2
237AN1827	SUMMITCREST COMPLETE 1P55	-0.3	0.5	0.5	-0.1	1.4	0.2	0.2				12	3		1
237AN1842	STEVENSON CE DELUXE 1914	-0.4	-0.8	-0.2	-1.2	0.1	-0.5	0.3	0.3	0.6	0.6	PE	PE	PE	0
237AN2064	G A R ULTIMATE	-0.4	0.8	1.0	-0.7	-0.1	0.4	0.9				PE	PE		0

Fall 2008 GTS ABS Angus Sires Top 15 Sires for Body and Udder Traits



Top 15 ABS Angus Sires for Capacity
with progeny evaluated

NAAB Code .	Name	Capacity	Prog Body	Herds
29AN1639	OPEN RANGE	3.9	36	2
29AN1623	ALLIANCE I87	2.8	118	7
29AN1636	MAGNITUDE	2.7	37	3
29AN1519	PLOWMAN	2.2	131	17
29AN1640	IN FOCUS	2.2	201	23
29AN1596	IDEAL 7451	1.9	101	6
29AN1501	602C	1.7	442	33
29AN1569	BANDWIDTH	1.5	37	3
29AN1608	ANALYST	1.4	30	1
29AN1642	IMAGE MAKER	1.3	108	10
29AN1674	EXCELLENCY	1.2	11	1
29AN1574	OBJECTIVE	1.1	97	11
29AN1656	GREATPLAINS 9520	1.0	33	2
29AN1657	EXT A1747	1.0	14	1
29AN1530	POWER DESIGN	0.9	56	5

Top 15 ABS Angus Sires for Muscle
with progeny evaluated

NAAB Code .	Name	Muscling	Prog Body	Herds
29AN1519	PLOWMAN	2.6	131	17
29AN1636	MAGNITUDE	2.4	37	3
29AN1623	ALLIANCE I87	2.0	118	7
29AN1569	BANDWIDTH	1.6	37	3
29AN1501	602C	1.4	442	33
237AN1827	SUMMITCREST COMPLETE	1.4	12	1
29AN1633	SHEAR FORCE	1.3	42	5
29AN1640	IN FOCUS	1.2	201	23
29AN1567	MODERN DESIGN	1.1	43	4
29AN1677	PROTEGE	1.1	21	1
29AN1673	CONTRAST	1.0	31	1
29AN1619	MORGANS DIRECTION	1.0	80	8
29AN1608	ANALYST	0.9	30	1
29AN1653	MAINLINE	0.9	41	4
29AN1532	EXT 4137	0.8	51	3

Top 15 ABS Angus Sires for Feet & Pasterns
with progeny evaluated

NAAB Code .	Name	Feet & Pasterns	Prog Body	Herds
29AN1624	BANDO 0699	2.7	34	5
29AN1569	BANDWIDTH	2.4	37	3
29AN1640	IN FOCUS	2.3	201	23
29AN1677	PROTEGE	1.8	21	1
29AN1653	MAINLINE	1.8	41	4
29AN1574	OBJECTIVE	1.5	97	11
29AN1589	FORESIGHT	1.4	182	11
29AN1642	IMAGE MAKER	1.2	108	10
29AN1673	CONTRAST	1.2	31	1
29AN1627	CONNECTION X15	1.1	26	1
29AN1519	PLOWMAN	1.0	131	17
29AN1532	EXT 4137	1.0	51	3
29AN1633	SHEAR FORCE	1.0	42	5
29AN1657	EXT A1747	0.9	14	1
29AN1636	MAGNITUDE	0.9	37	3

Top 15 ABS Angus Sires for Body Length
with progeny evaluated

NAAB Code .	Name	Body Length	Prog Body	Herds
29AN1642	IMAGE MAKER	2.8	108	10
29AN1644	EXTRA K205	2.3	111	8
29AN1593	NEW DESIGN 9150	2.0	81	7
29AN1633	SHEAR FORCE	1.2	42	5
29AN1551	DESTINATION 928	1.2	61	13
29AN1650	DAYBREAK	0.9	18	2
29AN1624	BANDO 0699	0.8	34	5
29AN1616	NEW LEVEL	0.6	190	24
90AN1777	S A F CONNECTION	0.6	20	3
29AN1657	EXT A1747	0.5	14	1
29AN1543	STRATEGY	0.5	82	12
29AN1627	CONNECTION X15	0.4	26	1
29AN1674	EXCELLENCY	0.4	11	1
29AN1556	LEAD ON	0.3	192	33
237AN1680	S A F DIRECTIVE	0.2	29	2

Fall 2008 GTS ABS Angus Sires Top 15 Sires for Body and Udder Traits



Top 15 ABS Angus Sires for Udder Attachment
with progeny evaluated

NAAB Code .	Name	Udder Attach	ProgUdder	Herds
29AN1656	GREATPLAINS 9520	2.5	12	2
29AN1639	OPEN RANGE	2.3	15	2
29AN1501	602C	1.7	129	33
29AN1593	NEW DESIGN 9150	1.6	23	7
29AN1623	ALLIANCE I87	1.4	28	7
29AN1577	EXTRA H6	1.4	47	9
29AN1543	STRATEGY	1.0	10	12
29AN1520	N BAR PRIME TIME	1.0	27	7
29AN1532	EXT 4137	0.8	32	3
29AN1642	IMAGE MAKER	0.7	32	10
29AN1646	POUNDMAKER 21	0.7	15	3
29AN1640	IN FOCUS	0.7	18	23
29AN1589	FORESIGHT	0.7	21	11
29AN1644	EXTRA K205	0.4	28	8
29AN1519	PLOWMAN	0.3	16	17

Top 15 ABS Angus Sires for Udder Depth
with progeny evaluated

NAAB Code .	Name	Udder Depth	ProgUdder	Herds
29AN1656	GREATPLAINS 9520	2.3	12	2
29AN1639	OPEN RANGE	1.8	15	2
29AN1520	N BAR PRIME TIME	1.5	27	7
29AN1501	602C	1.5	129	33
29AN1593	NEW DESIGN 9150	1.4	23	7
29AN1577	EXTRA H6	1.3	47	9
29AN1556	LEAD ON	1.1	40	33
29AN1543	STRATEGY	0.8	10	12
29AN1646	POUNDMAKER 21	0.7	15	3
29AN1644	EXTRA K205	0.7	28	8
29AN1523	NEW DESIGN 878	0.4	104	45
29AN1623	ALLIANCE I87	0.4	28	7
29AN1627	CONNECTION X15	0.3	11	1
29AN1640	IN FOCUS	0.2	18	23
29AN1642	IMAGE MAKER	0.1	32	10

Top 15 ABS Angus Sires for Teat Size
with progeny evaluated

NAAB Code .	Name	Teat Size	ProgUdder	Herds
29AN1520	N BAR PRIME TIME	3.0	27	7
29AN1639	OPEN RANGE	2.7	15	2
29AN1577	EXTRA H6	2.5	47	9
29AN1501	602C	1.8	129	33
29AN1532	EXT 4137	1.8	32	3
29AN1623	ALLIANCE I87	1.6	28	7
29AN1656	GREATPLAINS 9520	1.5	12	2
29AN1593	NEW DESIGN 9150	1.2	23	7
29AN1589	FORESIGHT	1.1	21	11
29AN1644	EXTRA K205	1.0	28	8
29AN1642	IMAGE MAKER	0.9	32	10
29AN1543	STRATEGY	0.9	10	12
29AN1633	SHEAR FORCE	0.6	16	5
29AN1556	LEAD ON	0.6	40	33
29AN1618	PRIME CUT 0145	0.5	24	8

Top 15 ABS Angus Sires for Udder Composite
with progeny evaluated

NAAB Code .	Name	Udder Attach	Udder Depth	Teat Size	Udder Composite	ProgUdder	Herds
29AN1639	OPEN RANGE	2.3	1.8	2.7	2.3	15	2
29AN1656	GREATPLAINS 9520	2.5	2.3	1.5	2.1	12	2
29AN1520	N BAR PRIME TIME	1.0	1.5	3.0	1.9	27	7
29AN1577	EXTRA H6	1.4	1.3	2.5	1.7	47	9
29AN1501	602C	1.7	1.5	1.8	1.7	129	33
29AN1593	NEW DESIGN 9150	1.6	1.4	1.2	1.4	23	7
29AN1623	ALLIANCE I87	1.4	0.4	1.6	1.1	28	7
29AN1543	STRATEGY	1.0	0.8	0.9	0.9	10	12
29AN1644	EXTRA K205	0.4	0.7	1.0	0.7	28	8
29AN1532	EXT 4137	0.8	-0.7	1.8	0.6	32	3
29AN1642	IMAGE MAKER	0.7	0.1	0.9	0.6	32	10
29AN1556	LEAD ON	0.1	1.1	0.6	0.6	40	33
29AN1589	FORESIGHT	0.7	-0.1	1.1	0.5	21	11
29AN1646	POUNDMAKER 21	0.7	0.7	-0.2	0.4	15	3
29AN1640	IN FOCUS	0.7	0.2	0.3	0.4	18	23

Fall 2008 GTS
Angus Reference Sires
>200 Progeny



Name	Stature	Feminity	Capacity	Body Length	Muscling	Rear Legs	Feet & Pasterns	Udder Attach	Udder Depth	Teat Size	Prog Body	Prog Feminity	Progeny Udder	Herds
4S PONDEROSA	1.2	2.1	-0.6	1.5	0.5	0.6	0.2	-1.3	0.2	-1.1	253	249	193	79
A A R NEW TREND	-0.3	1.3	-0.7	0.1	-1.3	1.5	-2.7	2.1	0.9	0.1	1097	1029	603	140
B/R NEW DESIGN 036	0.6	0.0	-0.5	0.7	0.0	-0.5	-0.2	1.3	1.1	1.0	344	212	124	43
BALDRIDGE OSCAR	0.9	-0.9	1.5	0.8	1.2	1.0	-0.6	1.0	0.3	0.2	303	287	220	64
BASIN EMULATION 5653	-1.2	1.4	-0.5	-1.9	-1.6	1.7	-2.0	-0.5	-0.5	-0.1	523	339	159	16
BASIN MAX 602C	0.0	-2.4	1.7	-1.1	1.4	-0.3	0.8	1.7	1.5	1.8	442	191	129	33
BON VIEW BANDO 598	-0.1	1.6	0.1	0.4	0.2	0.4	1.2	1.3	0.1	1.1	357	206	46	52
BON VIEW NEW DESIGN 1407	-0.1	-0.9	0.0	-0.8	-0.7	-0.1	-0.3	0.3	0.6	-0.4	258	101	37	40
BON VIEW NEW DESIGN 878	0.2	0.0	0.0	0.0	0.7	-1.2	0.4	0.3	0.4	-0.2	338	181	104	45
BROST POWER DRIVE	2.5	0.5	-0.6	2.4	-0.6	0.1	0.2	0.2	1.7	0.7	201	187	123	71
CONNELY DATELINE	-0.6	-0.1	0.7	-0.1	0.6	0.6	0.2	1.0	1.1	1.0	215	92	38	24
D H D TRAVELER 6807	-1.3	-0.2	2.1	-1.3	2.1	-0.7	0.3	2.5	1.9	1.9	723	514	190	110
EMULATION N BAR 5522	-1.3	-1.0	0.8	0.0	1.2	0.0	0.0	3.0	2.1	3.6	527	464	237	59
G A R SLEEP EASY 1009	-0.5	0.7	0.1	-0.7	-0.6	-1.1	0.8	0.3	0.0	0.2	239	161	50	67
G D A R EQUALIZER 6148	0.7	1.0	-1.0	0.5	-2.3	1.0	-1.9	3.0	1.5	0.7	378	312	137	69
G D A R EXECUTIVE 727	0.2	0.0	0.1	-0.6	0.6	0.1	0.0	0.6	0.1	-0.6	286	243	102	63
G D A R OSCAR 711	0.4	-0.7	0.4	-0.5	1.1	0.0	1.0	1.4	1.0	2.0	248	184	48	54
G D A R RAINMAKER 340	-0.3	2.0	-1.1	-0.8	-1.3	-0.4	0.8	2.2	1.3	1.1	715	502	275	102
G D A R RITO 596 L T	-0.2	0.9	0.5	-0.4	1.4	-0.9	1.9	1.9	1.3	1.0	455	381	164	100
G D A R TRAVELER 71	-0.6	1.7	0.3	0.2	-0.1	0.1	0.1	1.3	0.4	0.3	479	326	133	84
G T MAXIMUM	0.9	-2.5	2.6	0.8	2.3	0.0	0.5	-0.3	0.3	0.4	1199	690	203	118
HOFF HI FLYER S C 7134	1.6	0.3	-0.3	2.1	-0.2	0.8	-0.7	-0.7	0.2	-1.6	309	228	71	57
HOFF HI HAND S C 654	1.5	-1.6	1.1	1.7	0.6	1.6	-0.8	-1.7	-1.5	-0.1	380	293	89	90
HOFF HI SPADE S C 491	1.9	-0.6	0.6	1.7	0.0	1.4	-1.0	-1.1	0.4	0.2	495	376	191	112
HOFF NORTHLANDER S C 6029	1.6	1.4	-0.5	1.8	-0.1	-1.1	0.7	1.0	1.1	-0.1	363	306	108	79
HOFF VALEDICTORIAN S C 925	1.6	-0.7	0.9	0.8	0.5	-0.3	0.2	0.5	0.7	-0.9	418	364	177	87
LEACHMAN CONVEYOR	-1.1	1.2	0.5	-1.4	-0.1	-0.7	0.2	2.9	2.0	2.5	239	115	12	13
LEACHMAN HOSS	1.8	1.6	-0.5	1.8	0.6	-0.6	1.1	-0.6	1.5	0.1	227	211	93	54
LEACHMAN PROMPTER	1.9	-0.2	-0.5	1.5	-0.2	-0.2	-0.6	-0.8	1.4	0.3	285	243	114	71
LEACHMAN RIGHT TIME	-0.4	1.0	0.5	0.0	0.6	1.7	-0.8	2.4	1.8	3.3	375	158	75	49
LEACHMAN TONTO	0.0	-0.9	-0.5	-0.6	-0.3	-0.5	1.1	0.5	0.3	-1.9	429	334	142	72
MED ROCK TRAVELER JR	-1.1	1.0	0.7	-1.1	0.7	0.1	-1.5	1.2	0.1	1.6	263	83	51	8
MINERTS FORTUNE 2000	0.5	1.0	1.2	0.1	0.3	-0.1	1.4	1.0	0.7	0.2	270	195	44	49
MYTTY IN FOCUS	-1.0	-1.9	2.2	-1.7	1.2	-1.4	2.3	0.7	0.2	0.3	201	123	18	23
N BAR EMULATION EXT	-0.6	1.3	0.6	0.8	0.9	-0.1	0.6	3.4	2.2	3.9	1284	818	264	150
P S POWER PLAY	0.9	0.3	1.1	0.6	0.9	0.7	0.3	-1.7	-0.4	-0.1	447	435	381	111
PARAMONT AMBUSH 2172	-0.7	-0.3	0.2	-0.3	0.6	1.4	-1.6	0.9	-0.1	1.5	244	176	81	52
PINE DRIVE BIG SKY	1.6	0.3	-0.1	1.3	0.3	0.2	-0.1	-1.2	0.0	-1.3	758	707	517	158
Q A S TRAVELER 23-4	-0.8	0.8	-0.1	-0.9	0.8	-0.5	0.6	1.8	0.6	0.8	2376	1976	1167	281
R R TRAVELER 5204	-0.3	0.9	0.0	-0.3	-0.7	-0.8	0.2	3.0	1.1	2.7	279	207	87	73
R&J MAXIMA	1.2	-0.2	-0.1	1.1	0.5	0.3	0.7	-1.8	1.1	0.4	252	206	77	69
RAMBO 465T OF J R S	0.8	1.3	-1.3	0.5	-1.2	0.8	-0.2	-0.4	0.4	-0.6	287	187	78	23
RITO 2100 G D A R	0.7	0.2	1.1	0.3	0.2	-0.6	1.5	1.1	0.1	-1.4	1494	1275	658	206
RITO 8E8 OF 5H11 TRAVELER	-0.8	-2.0	0.9	-0.3	1.5	1.2	-0.2	-0.5	-0.3	0.3	361	295	100	64
RITO 9J9 OF B156 7T26	-0.8	-0.7	0.7	-0.6	2.1	-3.9	2.3	-0.1	-0.6	0.2	276	262	145	49
ROCKN D AMBUSH 1531	-0.5	0.6	-0.7	-0.9	0.2	0.1	0.6	-0.4	-0.4	0.3	203	133	67	24
S A F FAME	0.1	0.6	0.2	0.1	0.5	-0.5	1.4	0.8	1.3	0.4	271	121	34	28
S A F POWER FIX	0.9	0.8	-1.7	1.6	-0.8	-0.4	1.0	0.4	1.5	0.2	318	230	72	63
SCHEARBROOK SHOSHONE	-2.1	1.0	1.0	-1.5	-0.6	1.3	-4.8	-2.7	-4.0	-2.8	219	216	197	46
SCOTCH CAP	0.2	-0.4	1.0	-0.5	0.9	1.3	-0.4	-1.0	0.5	-0.9	1067	965	469	159
SITZ ALLIANCE 6595	0.1	-1.4	1.5	-1.3	0.6	-1.4	1.0	1.9	0.7	1.2	236	118	39	44
SITZ TRAVELER 8180	-0.5	0.0	1.3	-0.1	0.0	0.7	-0.6	2.1	0.8	1.2	204	106	39	30
SUMMITCREST HI FLYER 3B18	1.0	-1.5	-0.6	1.1	0.1	-0.4	0.6	-0.1	0.2	-0.3	207	127	29	17
TC DIVIDEND 963	0.7	1.2	-1.4	1.0	-0.9	-0.3	-0.7	1.4	1.8	3.3	328	245	70	65
TC RANCHER 056	-0.1	0.5	-0.4	-0.6	0.2	0.2	-0.1	0.1	0.3	-0.3	200	111	50	17
TC STOCKMAN 365	0.7	-0.3	-1.0	0.9	0.6	-0.1	-0.5	-0.8	0.2	-0.6	353	175	51	31
TEHAMA BANDO 155	-0.8	-0.4	0.6	-0.7	0.8	-0.1	0.1	2.3	0.8	1.3	860	721	319	126
V D A R NEW TREND 315	1.1	1.5	-0.5	0.8	-0.2	-0.4	1.5	-0.2	0.4	0.4	426	313	91	94
V D A R TRAVELER 722	-1.0	2.5	1.3	-1.0	-0.3	-0.6	1.0	2.2	1.5	1.2	300	217	17	49
VANCE TOP DAWG	0.1	-0.8	0.1	1.4	-0.1	0.9	-2.3	0.5	0.1	1.0	230	221	174	66
WOODHILL TRIPLE THREAT	0.2	-1.0	-0.1	0.7	-0.1	1.6	-1.3	1.6	1.6	-1.1	211	158	42	48

Fall 2008 GTS ABS Red Angus Sires



NAAB Code .	Name	Stature	Feminity	Capacity	Body Length	Muscling	Rear Legs	Feet & Pasterns	Udder Attach	Udder Depth	Teat Size	Prog Body	Prog Fem	Prog Udder	Herds
AR0142	LOGAN	0.1	0.3	0.1	-0.4	-0.1	0.1	-0.6	0.8	0.6	0.7	174	119	50	23
AR0174	REBELLAS ROBINHOOD	-0.5	0.5	-0.5	-0.1	0.6	-0.3	0.8				30	17		5
AR0175	BANDITO TRES	-0.1	0.0	0.1	-0.4	1.0	-2.5	0.7	0.0	-0.1	-0.1	26	11	PE	4
AR0176	JR 107	1.8	1.5	-0.2	3.5	0.0	2.2	-1.7				24	24		5
AR0178	BANDITO CINCO	0.3	-0.1	0.3	0.6	0.3	-0.5	-0.1	0.0	-0.1	-0.1	PE	PE	PE	0
AR0182	BASIN 79E	-1.3	-0.2	-0.6	-0.3	-1.1	1.1	-1.6	-0.1	0.4	0.5	38	26	20	6
AR0183	ABOVE & BEYOND	-0.2	2.3	-0.8	1.8	-0.2	1.0	-1.8	-0.1	0.0	-0.2	55	38	20	2
AR0186	CHEROKEE CANYON	-1.9	-2.4	0.8	-2.2	3.0	-4.1	3.9	1.1	0.8	-0.1	260	163	74	15
AR0187	LANCER	-1.5	-1.4	1.4	-2.4	1.2	0.3	-2.3	0.8	1.6	1.4	86	72	27	6
AR0195	FOUNDATION	-0.5	-0.6	0.2	-0.5	0.5	0.1	0.0				PE	PE		1
AR0196	CHEYENNE	-0.3	-0.3	0.5	1.2	0.4	-1.0	1.2	0.6	0.4	0.0	52	34	PE	6
AR0199	ROMEO	-0.7	-2.8	1.2	-0.8	-0.8	-0.4	-0.3	-1.1	-0.5	-0.2	79	74	20	6
AR0200	VAQUERO	0.2	-0.2	0.5	0.9	0.2	-0.3	-0.7				11	10		3
AR0201	COMBINATION	1.2	-0.2	-0.7	1.5	-0.1	-1.1	-0.6	-0.8	-0.3	-0.4	32	27	10	4
AR0203	STERLING	-0.7	-0.5	0.8	-1.0	0.5	0.2	-0.9	0.1	0.7	0.6	PE	PE	PE	1
AR0205	JUDGE	-1.1	-1.2	1.1	-1.1	0.5	0.2	-0.6	0.4	-0.2	0.2	PE	PE	PE	2
AR0208	SHOCO DATA	-0.1	-1.3	1.9	1.0	2.1	-0.6	1.5	0.6	-0.6	0.9	42	42	21	2
AR0209	OUTER LIMIT	0.0	1.3	-0.3	1.1	0.0	0.7	-1.0	0.2	-0.1	-0.1	PE	PE	PE	0
AR0211	DAKOTA COPPER	1.2	0.1	-0.3	2.1	0.9	-1.4	0.6	0.5	0.5	-0.3	21	21	16	1
AR0212	CELEBRATION	-1.0	-1.1	1.2	-0.9	0.5	0.1	-0.9	0.6	-0.3	0.0	PE	PE	PE	0
AR0214	LARAMIE	-0.5	-0.2	0.1	0.5	-0.1	-0.3	0.2	0.3	0.3	0.1	PE	PE	PE	0
AR0215	GRAVITY	-0.8	-1.3	0.7	-0.9	1.7	-2.5	1.7	0.8	0.3	-0.3	PE	PE	PE	2
AR0218	NORSEMAN KING	0.0	1.6	-0.3	0.1	-0.2	-0.5	0.3				18	18		1
AR0219	CITADEL	0.6	0.6	0.0	0.7	0.5	-0.8	0.6	-0.1	-0.5	-1.4	PE	PE	PE	0
AR0229	ASSURANCE	-0.5	-0.8	0.7	-0.5	0.5	-0.1	-0.3	0.2	-0.2	0.0	PE	PE	PE	0
AR0230	PEDRO	-0.6	-0.4	0.4	-0.4	0.9	-1.2	0.9				PE	PE		0
AR1149	TREND SETTER	-0.2	-0.5	1.6	-0.2	0.8	-0.6	-0.4				13	13		1

Fall 2008 GTS
ABS Simmental Sires



NAAB Code .	Name	Stature	Feminity	Capacity	Body Length	Muscling	Rear Legs	Feet & Pasterns	Udder Attach	Udder Depth	Teat Size	Prog Body	Prog Fem	Prog Udder	Herds
SM0298	BLACK IRISH	0.0	-0.9	1.0	0.1	0.5	1.5	-1.5	-0.4	-0.7	-0.3	135	112	40	34
SM0318	BIG SKY	-0.7	0.5	0.4	-0.5	-0.3	-0.2	0.0	0.4	0.8	0.5	99	68	15	15
SM0334	JALAPENO	-0.4	-0.4	0.0	-0.2	0.2	0.2	-0.4	-0.1	-0.6	0.3	PE	PE	PE	2
SM0339	DESPERADO	-1.5	1.0	0.7	0.1	1.4	0.4	0.5	1.8	1.2	2.4	60	44	17	16
SM0356	LUCKY NUMBERS	-0.3	0.3	0.1	0.2	0.3	0.1	0.0	0.0	0.6	0.6	PE	PE	PE	0
SM0366	GOLD MINE	-0.4	0.3	0.2	0.0	0.2	0.0	0.3				PE	PE		2
SM0367	LIBERTY	-0.2	-0.2	-0.1	1.6	0.7	0.1	0.7				19	9		3
SM0371	MACHO	-0.3	0.9	-0.2	-0.2	0.5	0.3	0.0				10	4		4
SM0373	DREAM ON	-0.4	-0.6	-0.5	0.3	-0.1	-1.4	-0.1	0.2	0.2	0.2	18	12	10	9
SM0374	POWER SOURCE	-0.3	0.3	0.0	0.1	0.2	-0.1	0.4				PE	PE		0
SM0375	LEGEND	-0.3	-0.2	0.7	0.5	0.9	0.7	-0.2	-0.3	0.4	0.1	PE	PE	PE	1
SM0376	FREEDOM	-0.2	-1.4	-0.3	-0.1	0.2	-0.3	-2.0				10	10		2
SM0378	DAKOTA	-0.5	-0.8	1.2	-0.4	1.5	-0.9	2.2	0.6	0.4	0.7	31	21	PE	6
SM0380	RED DREAM	-0.3	-0.2	0.0	0.2	0.2	-0.7	0.3				PE	PE		1
SM0383	STAR	-0.3	-0.2	0.0	0.2	0.2	-0.7	0.3				PE	PE		0
SM0388	RIGHT ON	-0.4	0.2	0.9	-0.7	1.0	-0.9	1.3	0.2	0.1	0.1	PE	PE	PE	0
SM0390	SURE BET	0.1	0.1	0.6	0.7	0.7	0.8	-0.1				PE	PE		1
SM0396	BLACK ICE	-0.4	-0.4	0.5	-0.1	0.8	-0.7	1.2				PE	PE		0
SM0397	SUPERIOR	-0.8	0.0	0.7	-0.5	1.1	0.0	1.1				PE	PE		0
SM0403	LEGACY	-0.6	0.3	0.5	0.1	1.4	-0.5	2.7	0.4	0.6	1.0	61	61	12	1
SM0928	LUCKY MAN	-0.1	0.0	0.5	0.1	0.0	-0.4	3.3	0.1	0.4	0.3	44	44	PE	4
SM0934	LUCKY ONE	-0.3	0.7	-0.4	-0.1	-0.2	-0.2	-1.7	0.9	0.8	1.2	14	14	PE	2